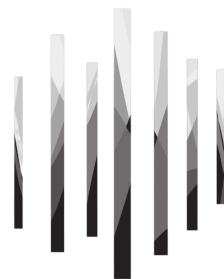


Galerie SCENE OUVERTE

Diane Benoit du Rey
Lumen

Exhibition from March 21th to April 27th 2024
72 rue Mazarine, 75006



SCENE OUVERTE
by LAURENCE BONNEL

PRESS RELEASE







Lumen is a collection of glass sculptures that wait silently to be revealed by light. Like animated paintings, colors and light vibrate, gradually revealing themselves until they reach saturation, as the desired intensity is reached. While the fluorescence and elongated forms of the luminous sculptures recall Dan Flavin's neon lights, the colorimetric chords and variations recall the works of Mark Rothko or James Turrell, from whom the artist drew so much inspiration during her career. For this exhibition, Diane has created ten *Lumen*.

Luminous phenomena and their chromatic iridescence are at the heart of Diane Benoit du Rey's work.

Lumen I
Lacquered glass



« Lumen is a collection of glass sculptures that wait silently to be revealed by light. »

Lumen II
Lacquered glass



Diane has worked with an artisan lacquerer to create this subtle interplay between matte and transparent layers applied to the sculptures, exposing us to an almost hypnotic sensory experience. Some of them evoke different shades of daylight, from golden twilight to mysterious dawn. The colors slowly fade, melting into the material of the glass. Sophisticated sfumatos, on the other hand, are reminiscent of soft morning mist, an invitation to escape and meditate.

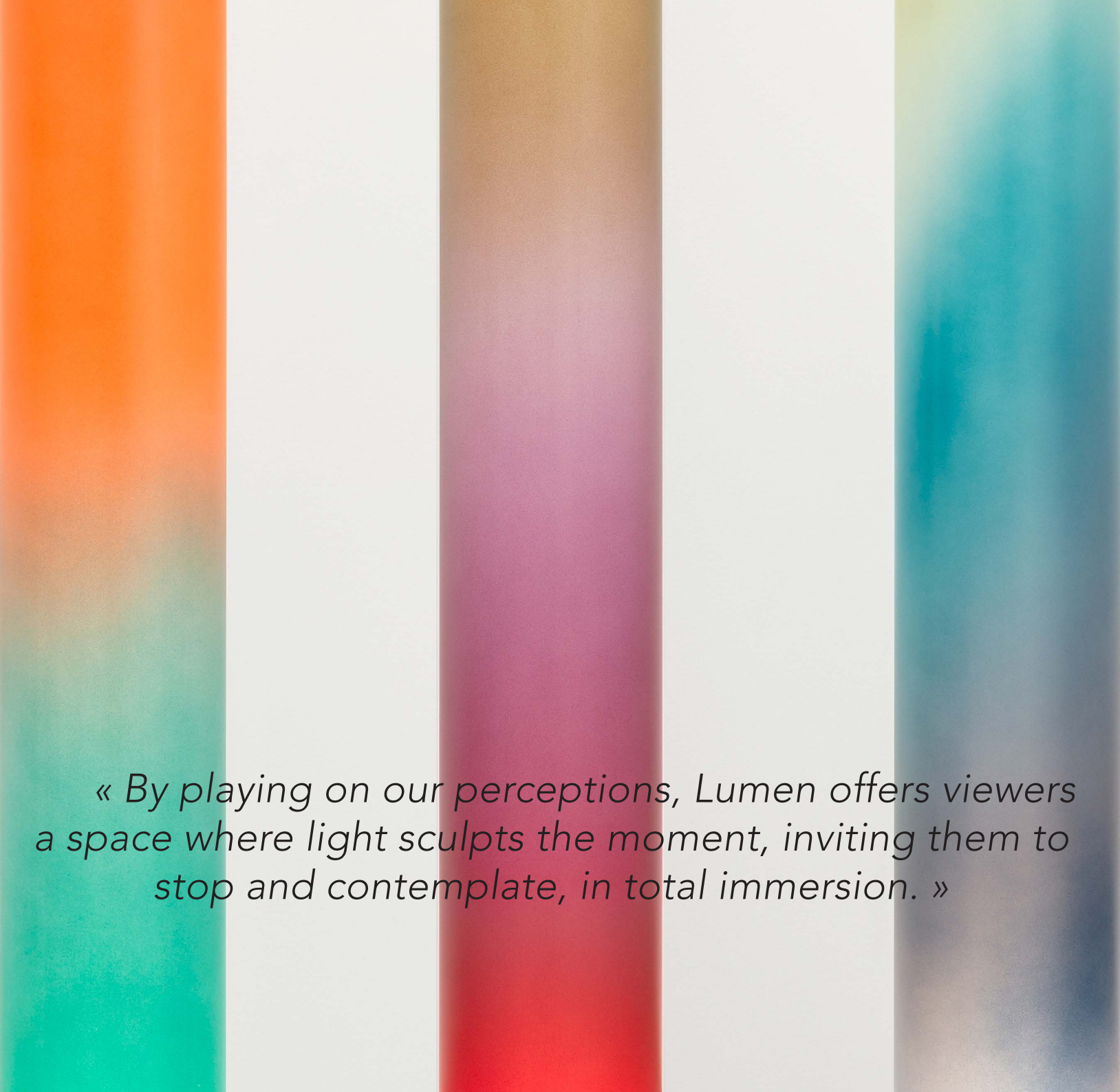
Others, more daring, recall the acidic brilliance of shimmering cameos in a poolside cocktail, or the fluorescence of the northern lights. They invite us to plunge into the intoxication of color.

By playing on our perceptions, *Lumen* offers viewers a space where light sculpts the moment, inviting them to stop and contemplate, in total immersion.

Lumen I (detail)
Lacquered glass

Lumen III (detail)
Lacquered glass

Lumen II (detail)
Lacquered glass

The image features three vertical columns of lacquered glass, each with a distinct color gradient. The leftmost column transitions from orange at the top to teal at the bottom. The middle column transitions from a light tan at the top to a deep red at the bottom. The rightmost column transitions from a pale yellow-green at the top to a dark blue at the bottom. The background is a plain, light color.

« By playing on our perceptions, Lumen offers viewers a space where light sculpts the moment, inviting them to stop and contemplate, in total immersion. »



Oscillation
Oil on canvas













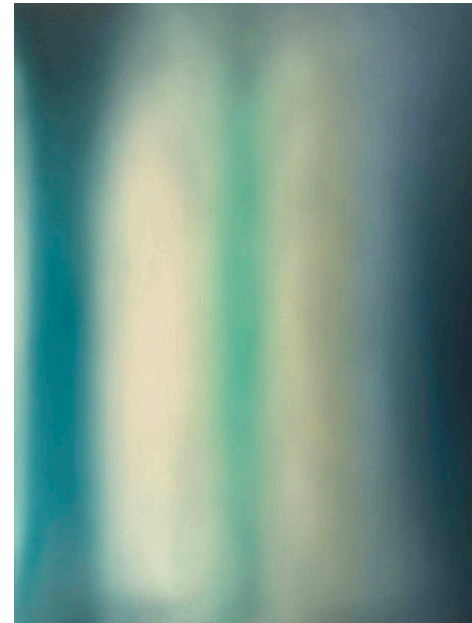


« Diane theorizes the way in which light sculpts space through the deployment of color. »

Diane Benoit du Rey

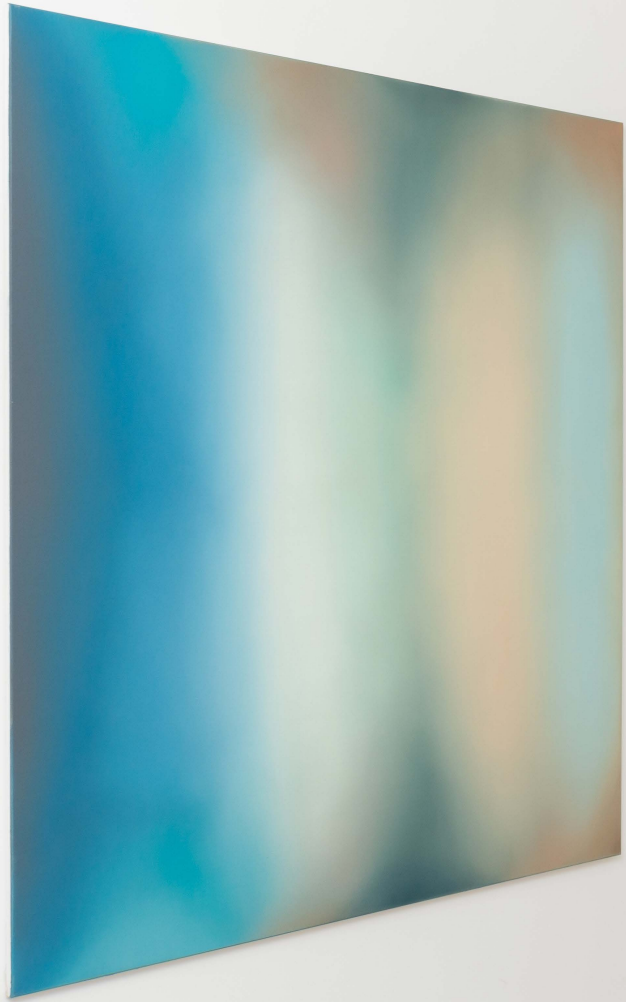
Diane Benoit du Rey, a young French painter born in 1989, studied at the École des Arts Décoratifs in Strasbourg (HEAR).

Oil on canvas has become her preferred medium for transcribing the vast expressive possibilities of color. In her canvases, Diane theorizes the way in which light sculpts space through the deployment of color. Her minimal pictorial art, with its multi-hued gradations, absorbs us and takes us into an elusive space : by creating a new pictorial experience, she makes us forget in order to better reveal.



Coulée
Oil on canvas

« by creating a new pictorial experience, she makes us forget in order to better reveal. »



Galerie SCENE OUVERTE

72 rue Mazarine,
75006

« For us, artistic creation lies in the harmony between aesthetics and function, where every stroke tells a story, every element serves a purpose, every gesture transmits a unique experience from the creator to the collector. »

Laurence Bonnel

laurence@galerie-sceneouverte.com
+33 (0)6 03 08 42 25

Zoé Desguées Vescia

zoe@galerie-sceneouverte.com
+33 (0)7 83 63 45 84



SCENE OUVERTE
by LAURENCE BONNEL



CONTACTS